

Motivation & Aims

... "the value and potential of the cultural heritage, if adequately managed as a resource, is the key element for the lasting development and for the quality of life in a society in continuous evolution" (Faro Convention - Art. 1, 2005).

Only preserving the awareness about the past, the new generations can be committed in creating a better future. With this idea in mind, the International Conference on Sustainable Cultural Heritage Management aims at offering a unique venue to gather academics, practitioners, and citizens to discuss the core elements of Cultural Heritage Management and Sustainability.



Under the Patronage of

Practical Information

NetMuse Team

c/o Dipartimento Studi Aziendali
Università Roma Tre
Via Silvio D'Amico, 77
00145 Roma -I-

Directions

From Termini Station:
Take metro B and exit San Paolo station. Proceed on via Chiabrera for about 600 meters, then turn left.
(Total Path 10 minutes, 650 meters)

Bus

Lines 23 – 715

TAXI

Tel. 06.0909

Contacts and updates

ph: +39 06 5733 5768

fax: +39 06 5733 5797

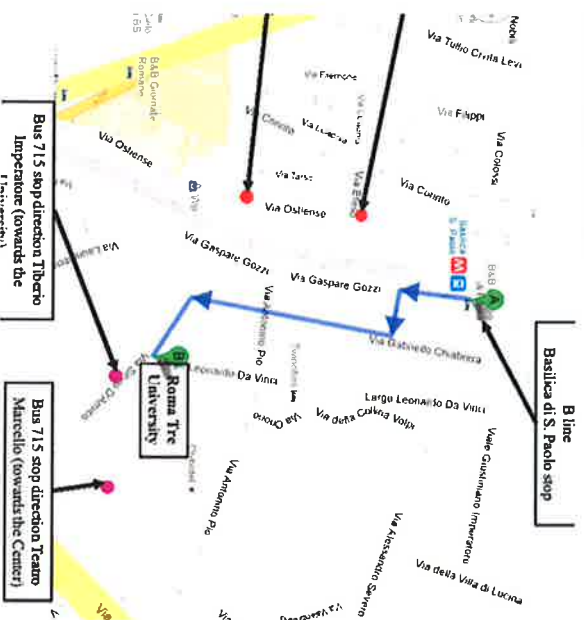
www.netmuse.eu

netmuse@uniroma3.it

Netmuse Roma Tre University



@NetMuseRomaTre



International Conference on Sustainable Cultural Heritage Management

Societies, Institutions, and Networks

Rome, October 11-12

www.netmuse.eu



Programme

October, 11 IDENTITY AND CULTURAL HERITAGE

Plenary
and Academic sessions
@ Roma Tre University

October, 11 THE FUTURE OF THE CULTURAL POLICIES

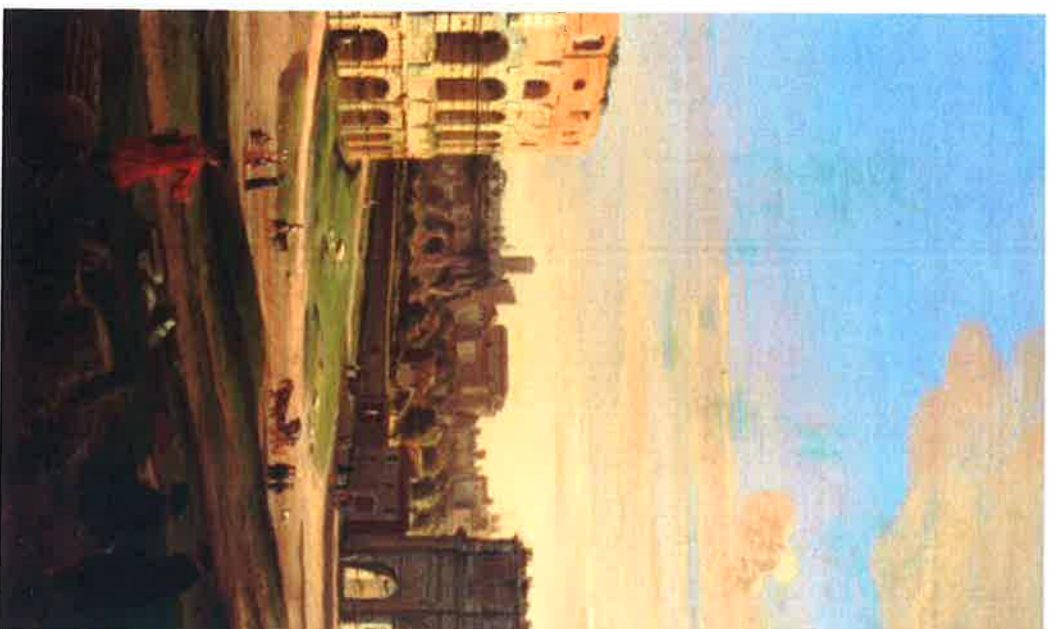
Round Table
and Networking
@ Palazzo Valentini

October, 11 SOCIAL EVENT

Guided Tours
@ Palazzo Valentini
and Domus Romanae

October, 12 INVOLVEMENT IN THE CULTURAL FIELD

Academic and
Professional sessions
@ Roma Tre University and
Pigorini Museum



9:00 Registration
9:30 Plenary session
Introduction

Mario Panizza, Rector
Roma Tre University
Lidia D'Alessio,
Director Department of
Business Studies
Roma Tre University
Key-note speeches:
Alessandro F. Leon,
President
CLEES
and *Associazione*
Economia della Cultura
Pier Giorgio Olivetti,
President
Cittaslow International

10:45 Coffee break
11:15 Academic sessions
13:00 Lunch
transfer to Palazzo Valentini

15:00 Round Table

Marco Causi
Professor of Culture
Economics
Roma Tre University
(moderator);
Annamaria Villa
Coordinator Department
of the European Policies;
Laura Tassinari
Director FILAS Lazio;
Pierluigi Matterna
Director Palazzo Braschi;
Bruno Francesconi
Manager PAC
BancoPosta Poste
Italiane;
Antonina Pasqua Recchia,
Italian Ministry of Culture
(invited)
Maura Picciau, Director
Museum MAT (invited)

17:00 Refreshments
and social event

The archaeological remains of
ancient Roman houses
uncovered beneath Palazzo
Valentini are now on permanent
display, adding to Rome's
already rich historical and artistic
heritage.
A team of art historians,
archaeologists and architects, all
working for the Provincial
Administration, worked on a
project to research, restore and
put these excavations on public
display. The results are of
exceptional significance,
revealing an area that was of
great importance in Roman times
and which can help piece
together the ancient, medieval
and modern topography of
Rome.

9:00

Invited talk by
Darius A. Anya,
Executive Director
American Institute for
Roman Culture

10:00 Coffee break
10:30 Poster exhibition
Academic session
Professional session
12:15 Presentation of the
results of the
NetMUSE Project
Closure and farewell
lunch

Possibility to visit the National
Museum of Prehistory and
Enography "L. Pigorini"